

# ECLIPSE

**Skill level:** Adventurous beginner or Intermediate  
**Technical skill developed:** Piecing curves (yes, you can!)  
**Design skill developed:** Understanding value

Explore luminosity by making *Eclipse* with the PRISM line designed by FunQuilts for FreeSpirit.

At FunQuilts we encourage quilters to experiment with color and value. By controlling the proportion of lights to mediums and darks in a quilt, you can make your quilt more luminous. Each of the colors in our PRISM line is available in two values so you can mix and match fabrics to make your quilt glow. *Eclipse* is a great project for experimenting with color and value and also an easy way to learn to piece curves. The blocks can be arranged in any order. Take your time laying it out to develop a composition that is pleasing to you.

We'll be posting photos to our website of quilts our students have made using PRISM fabrics. To share what you've done with the PRISM line or for other ideas, go to the fabric link at [www.funquilts.com](http://www.funquilts.com).



## Materials Needed

*Measurements are based on accurate cutting, 1/4" seam allowance and 42" wide strips. The finished quilt is approximately 50" x 50".*

You will need 1/2 yard of these ten fabrics for the 25 squares:

D 817-455, D 813-445, D 813-265, D 817-265,  
D 815-933, D 812-933, D 815-640, D 812-130,  
D 815-725, D 813-530

You will need 1/4 yard of these ten fabrics for the 21 arcs:

D 814-410, D 810-442, D 810-237, D 811-237,  
D 818-905, D 818-917, D 814-625, D 811-625,  
D 810-505, D 811-530

You will need 1/2 yard of D 817-510 for the binding and 3 yards of D 812-530 for the backing.

## Cutting Directions

1. Cut three 11 1/4" x 11 1/4" squares from each of five of the 1/2 yard pieces. Next cut two 11 1/4" x 11 1/4" squares from each of the remaining five 1/2 yard pieces. You will have a total of 25 squares.
2. Line up template C in the corner of one of the squares. Cut along the curve as shown in figure 1.
3. Line up template A in the corner of the quarter circle. Cut along the curve as shown in figure 2.
4. Discard the thin arc as shown in figure 3. Pin the two remaining pieces together as shown in figure 4.
5. Repeat steps 2–4 for 20 more squares.
6. Using template B cut two arcs each from nine of the 1/4 yard pieces. Cut three arcs each from the final 1/4 yard piece. You will have a total of 21 arcs.

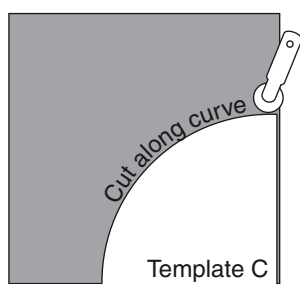


Figure 1

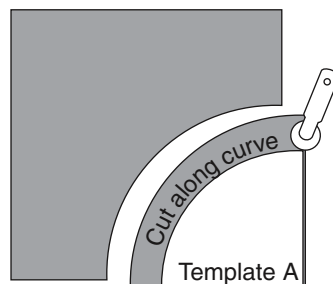


Figure 2

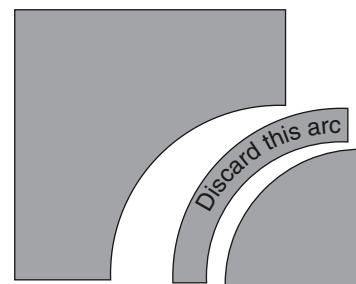


Figure 3

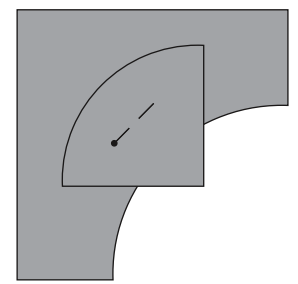


Figure 4

## Piecing and Quilting Directions

1. Match up the arcs with the paired sets you just cut by pinning the light green arcs to the darker green sets, the light blue arcs to the darker blue sets, etc. Set aside the four whole squares which you did not cut.

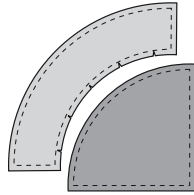


Figure 1

2. Notch the concave edge as shown in figure 1.

3. Placing right sides together, pin the arc to the quarter circle. Pin in the order shown in figure 2 – find the centers by folding the pieces in half and pin (number 1.) Pin the edges next (numbers 2 and 3.) Place final pins at numbers 4 and 5.

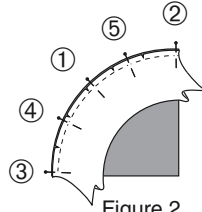


Figure 2

4. Sew together as shown in figure 3. Press seams open.

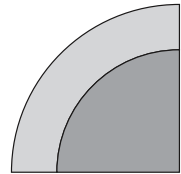


Figure 3

5. Notch the concave edge as shown in figure 4.

6. Placing right sides together,

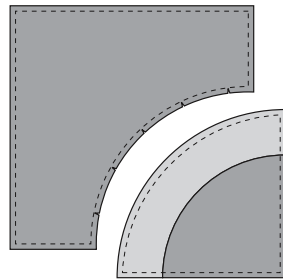


Figure 4

pin the square to the quarter circle. Pin in the order shown in figure 5. Find the centers by folding the pieces in half and pin (number 1.) Pin the edges next (numbers 2 and 3.) Place final pins at numbers 4 and 5.

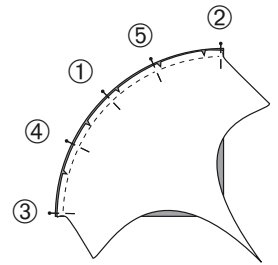


Figure 5

7. Sew together as shown in figure 6. Press seams open.

8. Lay out your blocks as shown in figure 7. Feel free to shift the blocks around until you like the composition.

To assure accurate piecing, align your seams and pin blocks carefully. Sew blocks together in five rows as shown in figure 7, then piece the rows together.

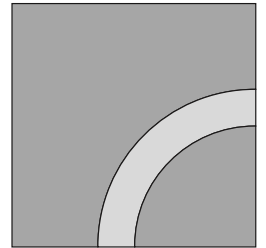


Figure 6

9. Layer top, batting, and backing then quilt.

10. Bind.

11. Enjoy your new quilt!

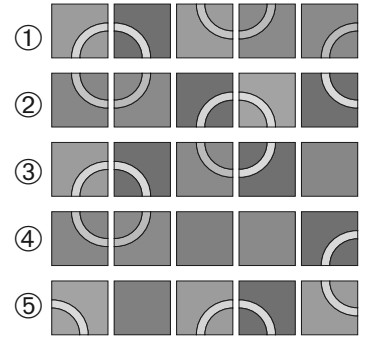
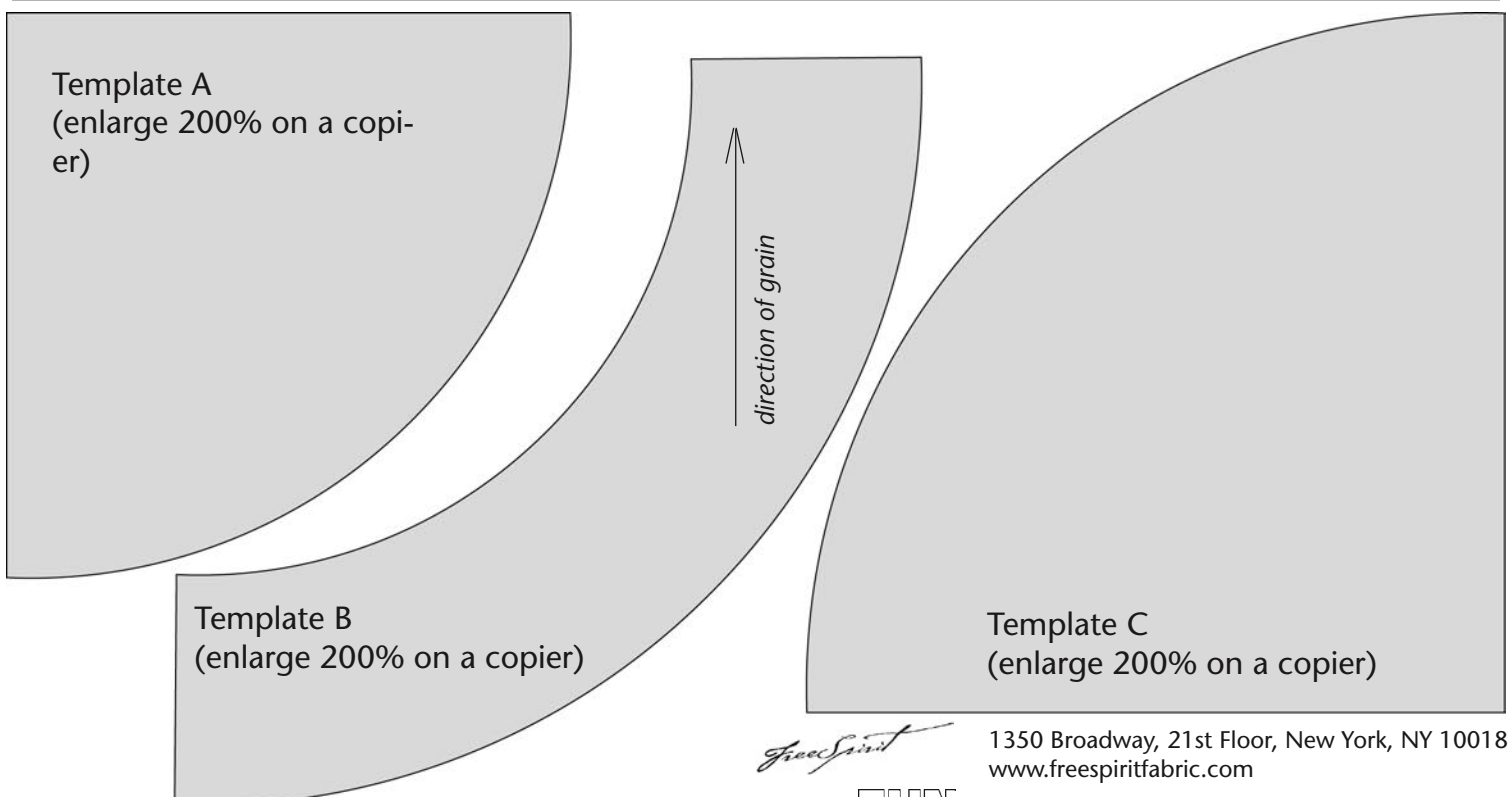


Figure 7



Template A  
(enlarge 200% on a copier)

Template B  
(enlarge 200% on a copier)

Template C  
(enlarge 200% on a copier)

*Free Spirit*

**FUN**  
**Quilts**

1350 Broadway, 21st Floor, New York, NY 10018  
www.freespiritfabric.com

634 Carpenter Avenue, Oak Park, IL 60304  
www.funquilts.com